

Nebraska Community Collaboratives

Thriving Families, Safer Children
Community and Family Leadership

Purpose and Outcomes of Session

Purpose:

Elevating engagement in communities to create conditions for well-being and co-create solutions and prevent unnecessary system entry.

Desired Outcomes:

- Participants will learn about the historical work done to implement prevention strategies and community collaboratives.
- Participants will learn about cross collaboration opportunities currently in place with public, private, national, and LEx communities to create conditions of well-being and prevention of system involvement.
- Participants will experience a local boots on the ground example



What if?

Imagine a different approach...

<https://vimeo.com/338077801>

Who is Community Response?

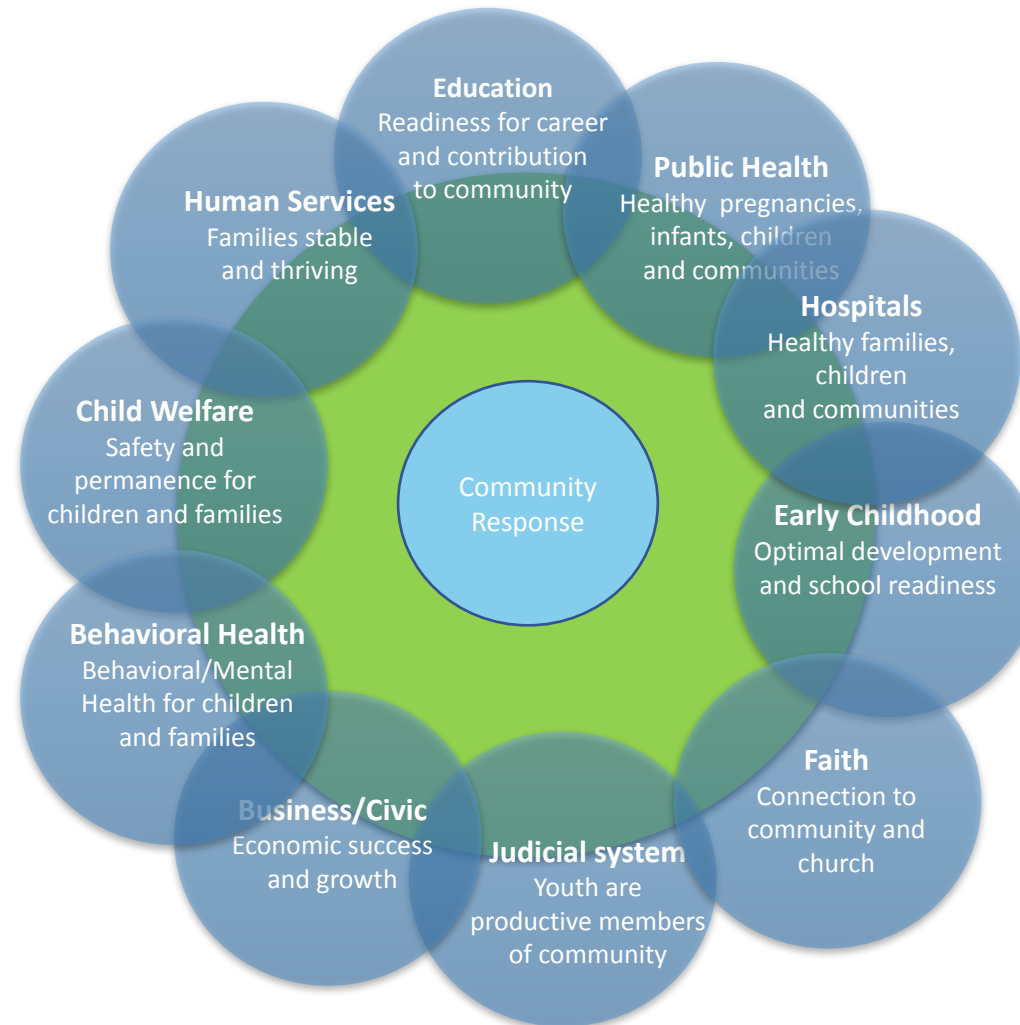


Community Response is all of us –

our friends, family, neighbors, co-workers, and community members – partnering together to build support systems, improve protective and promotive factors, and offer safety nets to prevent life's challenges from becoming crises that may result in involvement with higher-end systems of care.



Collective Impact for Community Well Being System Partners and Community Response



Community Response is the **Backbone Support** element of the Collective Impact approach adopted by Nebraska Children funded collaborations. CR is designed to be the coordination and intersection point where children, youth, families, and CR partners work together.



Cultivating the good life for all of our children.

Components of Community Response:

- Coordination of Services (Central Navigation)
- Direct Services (Coaching)
- Engagement and Leadership (youth and family driven service delivery, partnership, and leadership opportunities)



Central Navigation:

- Function by which families and young people are matched to appropriate services, referrals are made/shared across partners, data is tracked
- Ability to “fill gaps”, either through helping agencies partner around a common goal, or through flexible supportive funding
- Expertise in community trainings and resources for specific populations, provide consultation to coaches



Coaching:

- Anyone providing support to family or young person: school counselor, volunteer, agency service provider
- Both formal and informal coaching can and does exist
- There to help family or young person set, work toward, and attain goals



CFS and CR Working Together - Examples

**Individualized
Community Support for
active AR cases**

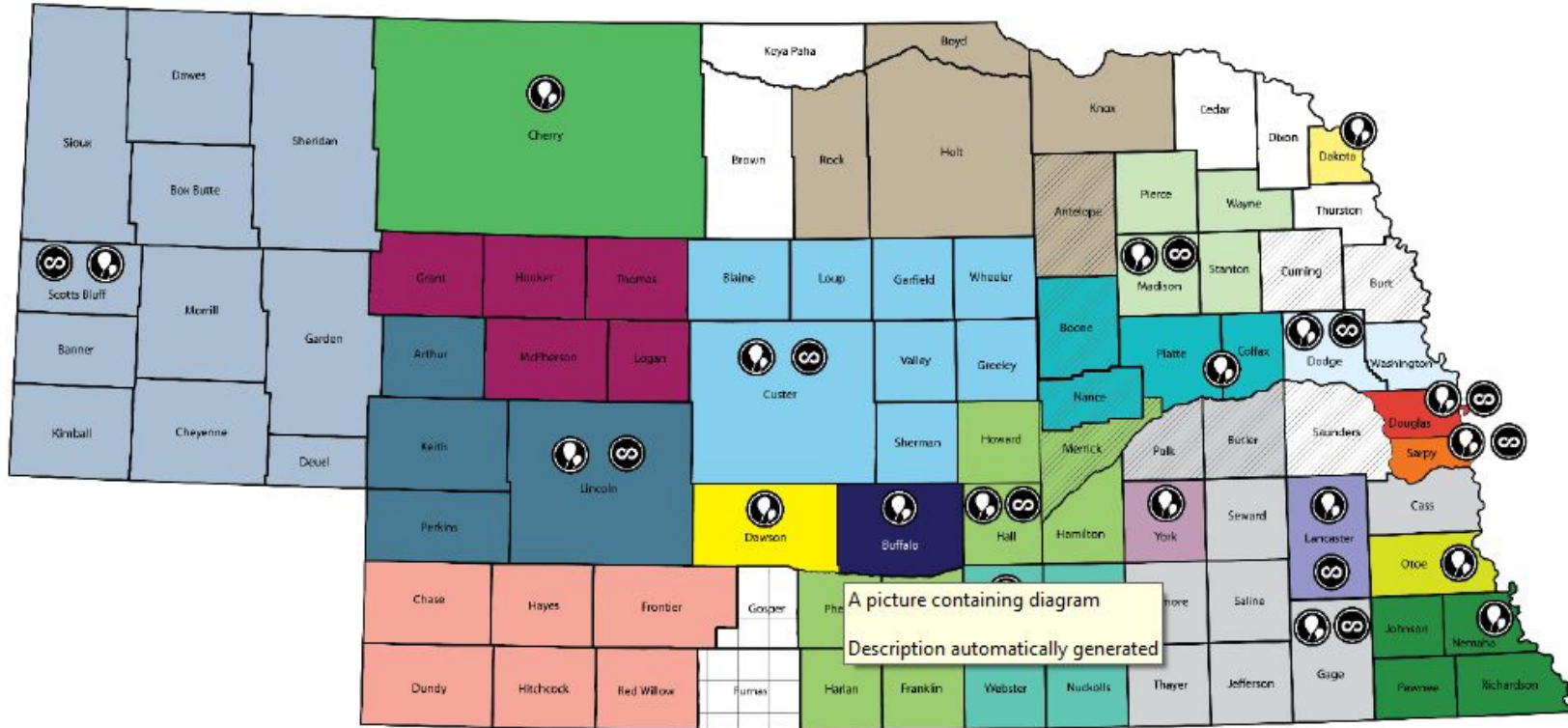
**Screened out Hotline call
referrals**

**CR connections at case
closure**

**Support during CPS
Investigation**

**Supports for young parents in
foster care, extended foster care,
or unconnected to other supports**





- Hall County Community Collaborative (H3C)/Central CYI
- Valentine Children and Families Coalition
- Buffalo County Community Collaborative
- Dawson County Community Collaborative
- Norfolk Family Coalition
- Families 1st Partnership
- Panhandle Partnership
- Sandhills Coalition
- Fremont Family Coalition
- Southeast Nebraska Collaborative/CYI-Blue Valley
- Growing Community Connections
- Douglas County Community Response Collaborative/ CYI-Project Everlast Omaha
- Lift Up Sarpy/CYI-Project Everlast Omaha
- Better Together Community Collaborative
- Lancaster County Community Response/ CYI-Project Everlast Lincoln
- Community and Family Partnership
- York County Health Coalition
- Community IMPACT Network
- Johnson, Nemaha, Pawnee, Richardson
- Santee-Sioux Nation
- Omaha Tribe of Nebraska
- Winnebago Tribe of Nebraska
- Western Nebraska Tribal CR

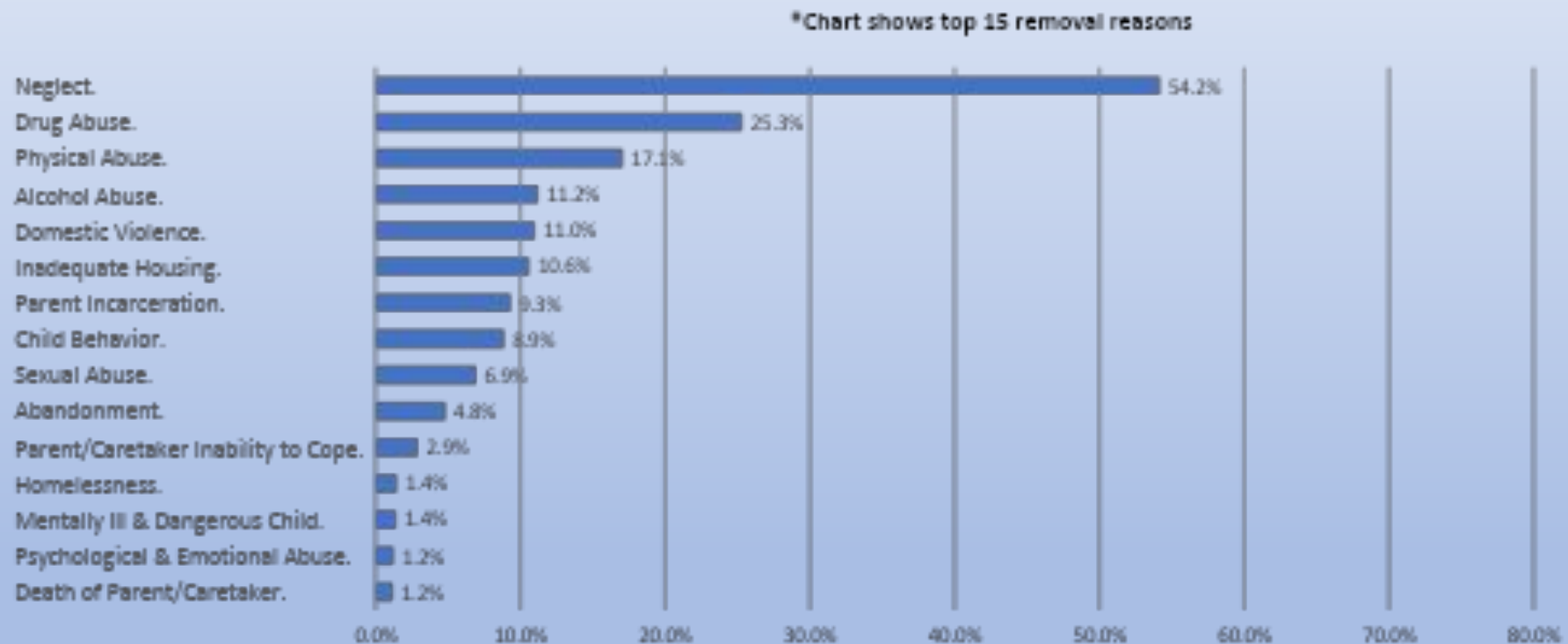
- Community Well-Being collaborative backbone
 - Collaboratives that are implementing full Connected Youth Initiative model
- The Connected Youth Initiative (CYI) is a statewide system of supports and best practices to serve young people aged 14-25. Central Navigation is the access point for CYI.

EXPANSION:

- Red Willow, Chase, Dundy, Hayes, Hitchcock, Frontier
- Grant, Hooker, Thomas, Arthur, McPherson, Logan
- Rock, Holt, Boyd, Antelope, Knox
- Gosper, Furnas
- CR "No Wrong Door" Coverage

Reasons for removal Calendar years 2021 – 2022

* multiple reasons may be selected for a single child



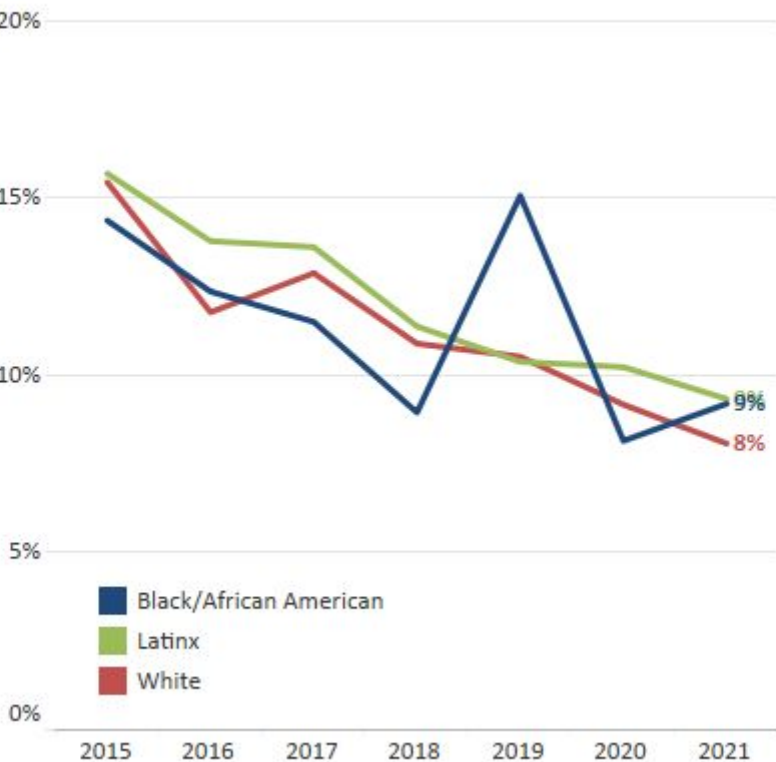
Substantiation Rate | Nebraska

At what rate are children screened in and substantiated for maltreatment?

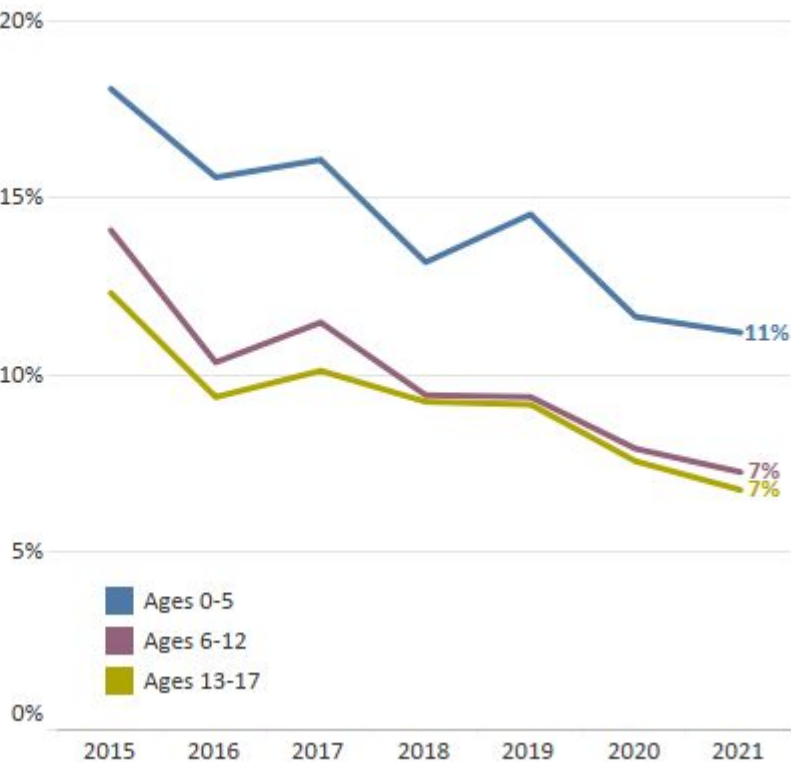
% children substantiated in an investigation



by race/ethnic group

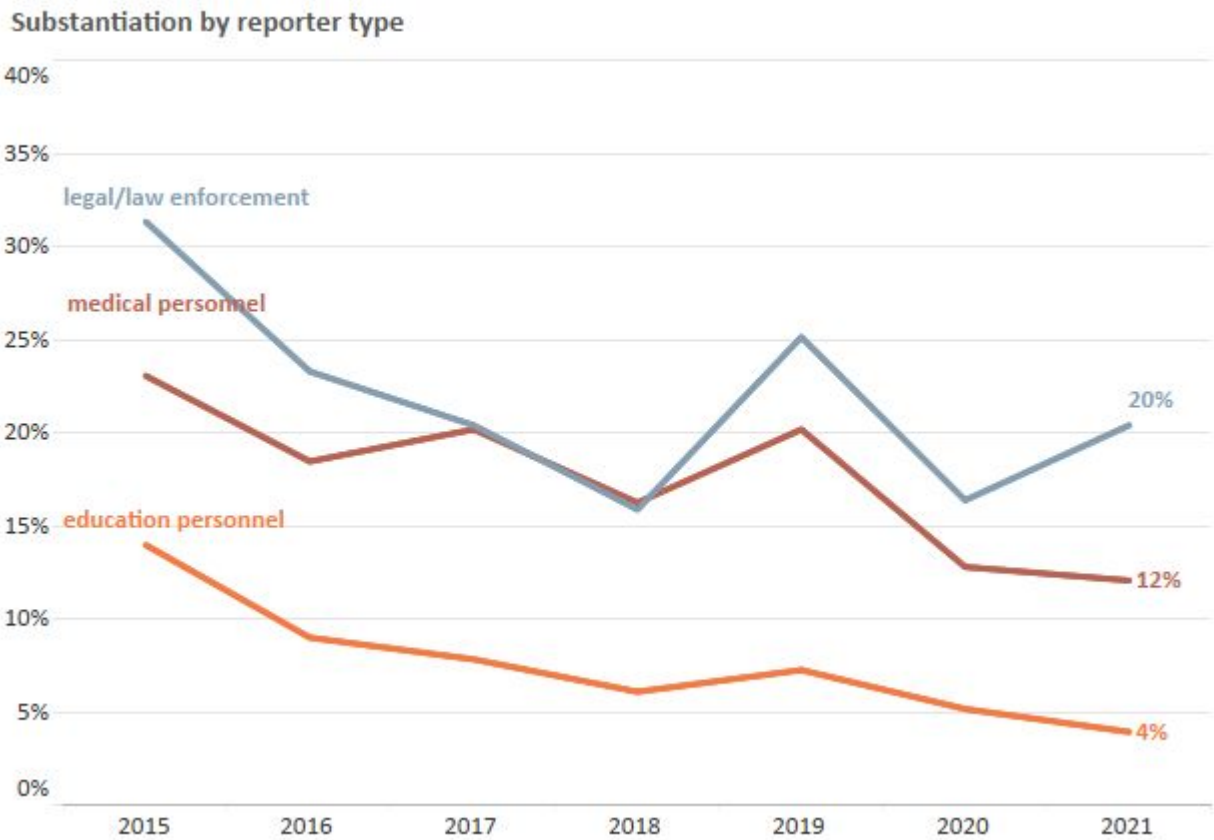
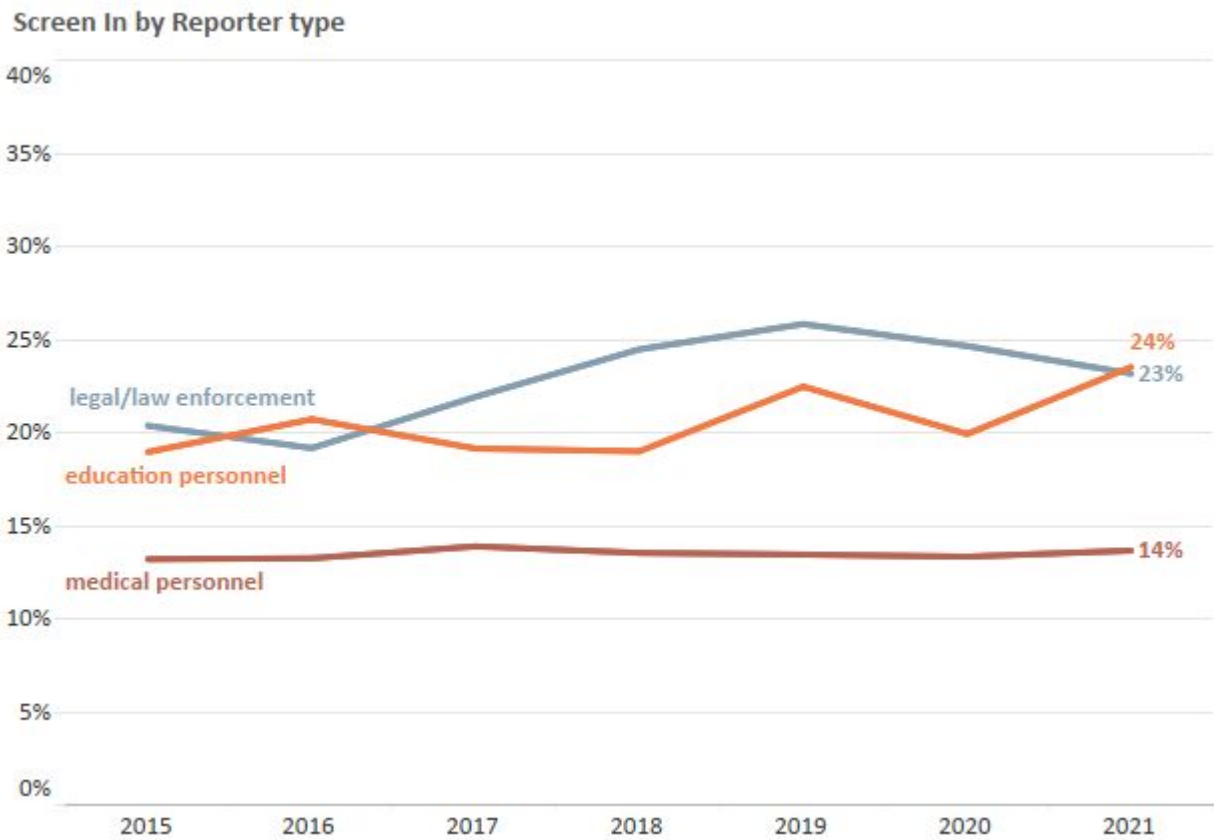


by age group



Reporter Type

Who are calling in reports of maltreatment and % of which are substantiated by reporter?



Source: State submitted NCANDS
Children < age 18

SUPPORT SERVICE FUNDS

Flexible and supportive funding (called Support Service Funds) is available through Central Navigation when needed. These funds are intended to “fill gaps” when other funding sources are not available or the participant doesn’t meet the criteria for other publicly available programs or resources.

SUPPORT SERVICE FUNDS DISTRIBUTED IN 2021-2022

Priority Area	Number of Requests	All Dollars	Percent of Total	Average Dollars per Request
Daily Living	263	\$41,278.03	2.0%	\$156.95
Education	26	\$7,726.12	<1%	\$297.16
Employment	5	\$161.50	<1%	\$32.30
Housing	1,365	\$1,087,584.03	51.8%	\$796.76
Mental Health	185	\$54,257.35	2.6%	\$293.28
Other	374	\$140,682.73	6.7%	\$376.16
Parenting	80	\$37,248.63	1.8%	\$465.61
Physical/Dental Health	46	\$15,772.10	<1%	\$342.87
Transportation	667	\$229,143.14	10.9%	\$343.54
Utilities	1,384	\$486,472.02	23.2%	\$351.50
2021-2022 Total	4,395	\$2,100,325.65	--	\$477.89
<i>2020-2021 Total</i>	<i>5,006</i>	<i>\$2,585,460.72**</i>	<i>--</i>	<i>\$413.44</i>
<i>2019-2020 Total</i>	<i>2,079</i>	<i>\$702,333</i>	<i>--</i>	<i>\$338</i>

***This amount includes federal CARES Act funding that was distributed to communities in 2020-2021. Caution is required when comparing these funds to prior years.*

Collective Impact for Community Well-Being

COMMON AGENDA & SHARED METRICS

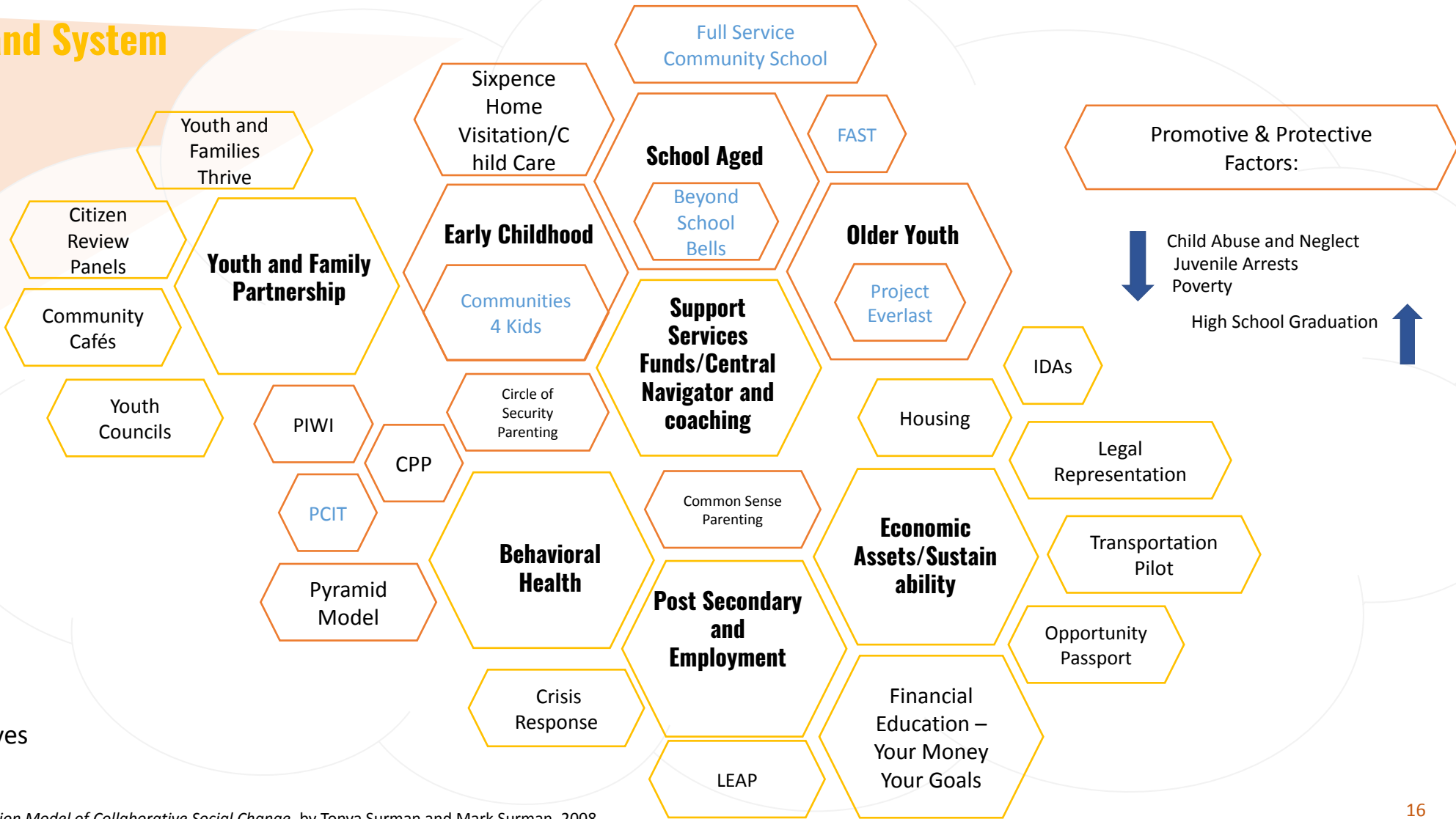
Backbone Support and System

Policy
Research and Evaluation
Training/EBPs
Marketing and Communications:
Grant Management
Fund Development
Fiscal accountability
Family and Youth Partnership – Lived Experience

Core Principles:

Collective Impact, Race Equity and Inclusion, Primary Prevention, Protective/Promotive Factors, Whole Family, Community Ownership, Lived Experience/Youth and Family Partnerships

- Work Group Initiatives
- NC Cross Cutting Initiatives



* Adapted from *Listening to the Stars: The Constellation Model of Collaborative Social Change*, by Tonya Surman and Mark Surman, 2008.

Community Response Model

Intersectional, individual-level strategies across the life-span



Bring Up Nebraska Collaboratives

A Statewide Prevention Partnership

https://youtu.be/D_dXMB4Mjwg

<https://bringupnebraska.org/>

Southeast Nebraska Collaborative Boots on the Ground

A local example of CR operationalized



Mission

To build collaboration among agencies and the broader community to support opportunities to improve the lives of families, individuals, and communities in southeast Nebraska.

We are building a community prevention system through community events, training, funding support, and policy.

sncollaborative.org

**Between July 1, 2021, and June 30, 2022, the Southeast Nebraska Collaborative,
in collaboration with partners, served:**

- **274 participants directly**
- **360 children directly**

And provided the following in terms of financial assistance:

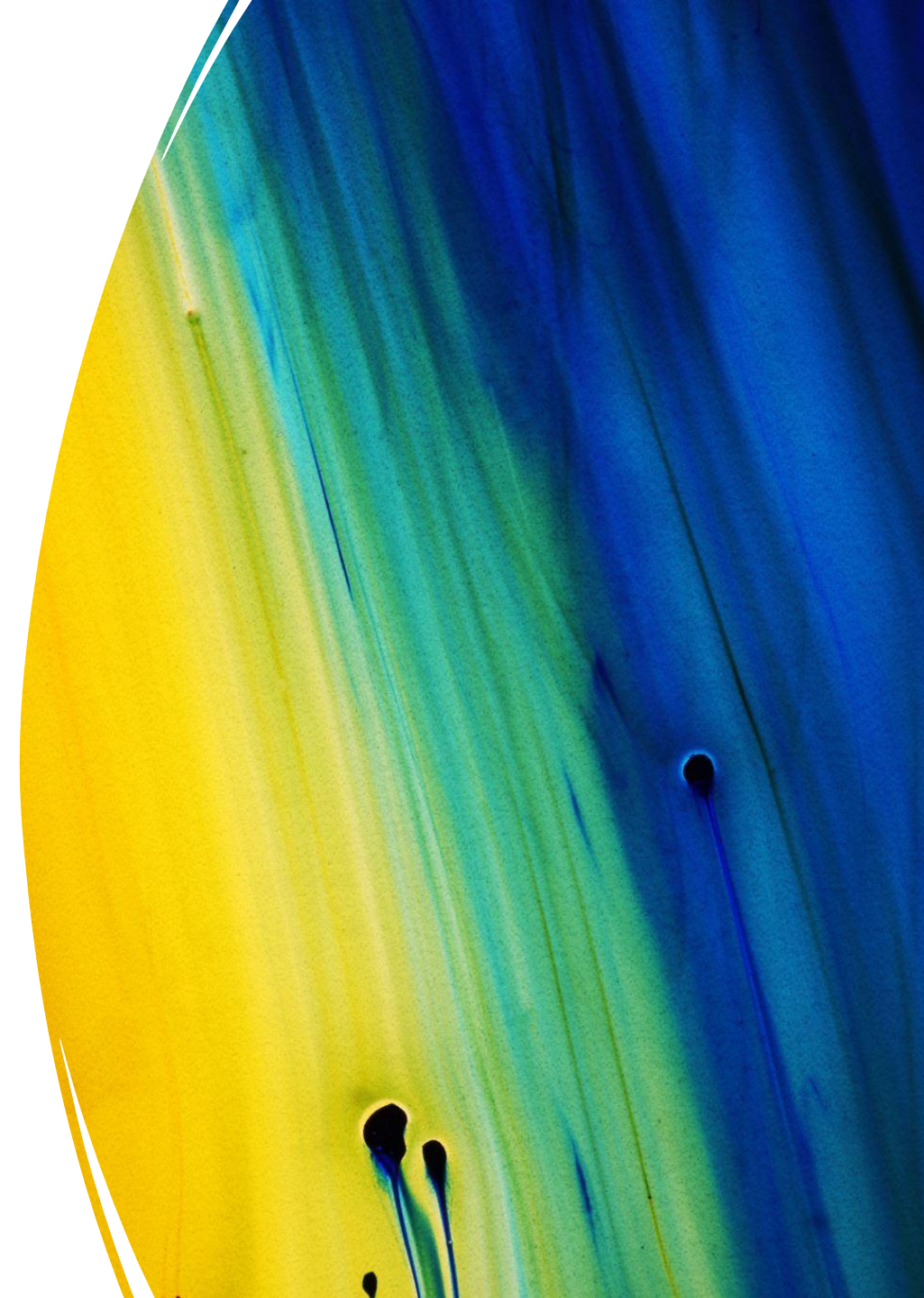
- **Housing \$ 17,127.25**
- **Transportation \$ 5,168.42**
- **Daily Living \$ 5,957.57**
- **Utilities \$ 12,282.99**
- **Parenting \$ 500.00**
- **TOTAL \$ 41,036.23**



Community Response in Southeast Nebraska

Panel

- Emma Johnson
- Jessica Acosta
- Amanda
- Jessa



Questions?



How to Contact Us

Kari Pitt, Prevention Unit Supervisor

Nebraska Department of Health and Human Services

- kari.pitt@nebraska.gov

Leonor Fuhrer, Assistant VP of Community Response

Nebraska Children and Families Foundation

- lfuhrer@nebraskachildren.org

Collena Laschanzky, Executive Director

Southeast Nebraska Collaborative

- collena@sncollaborative.org